

Safer Farms Agricultural

INJURY AND FATALITY – 2025 / Trent Report

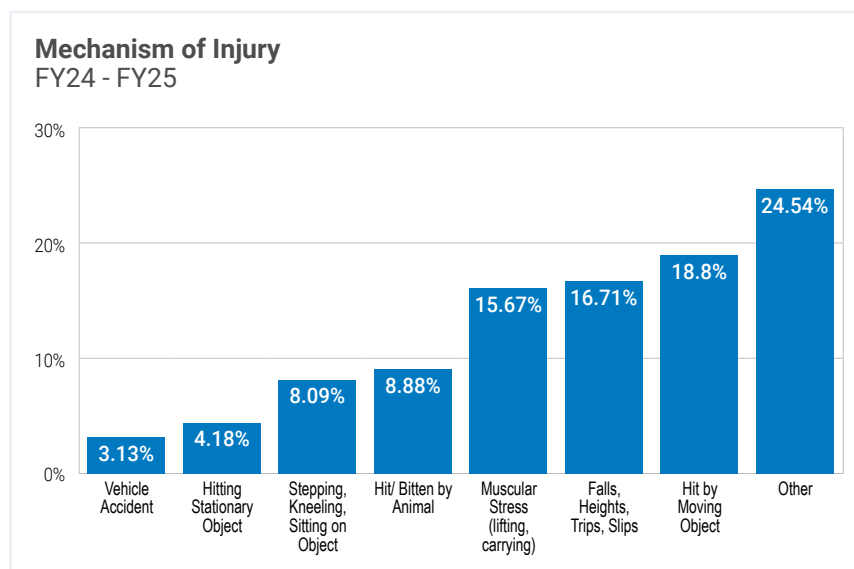
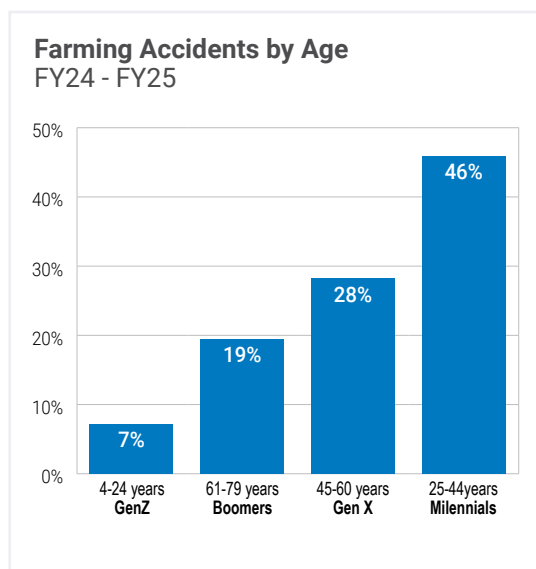
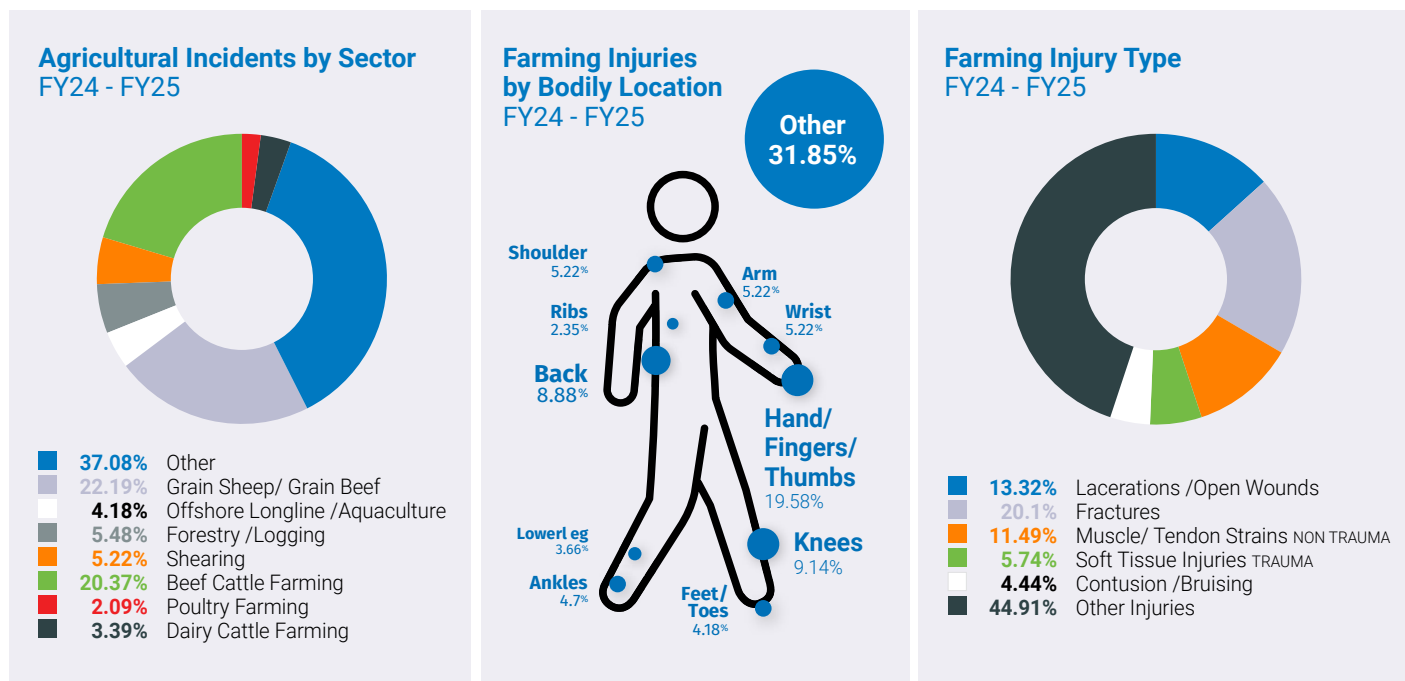


The mental health and wellbeing of farmers and their families continues to be a key focus for our business, with WFI joining the National Farmers Federation's call to action for further government investment in this space. Over the past year, we have seen a 75% increase in workers compensation claims relating to anxiety and stress, indicating there is a pressing need for more support.

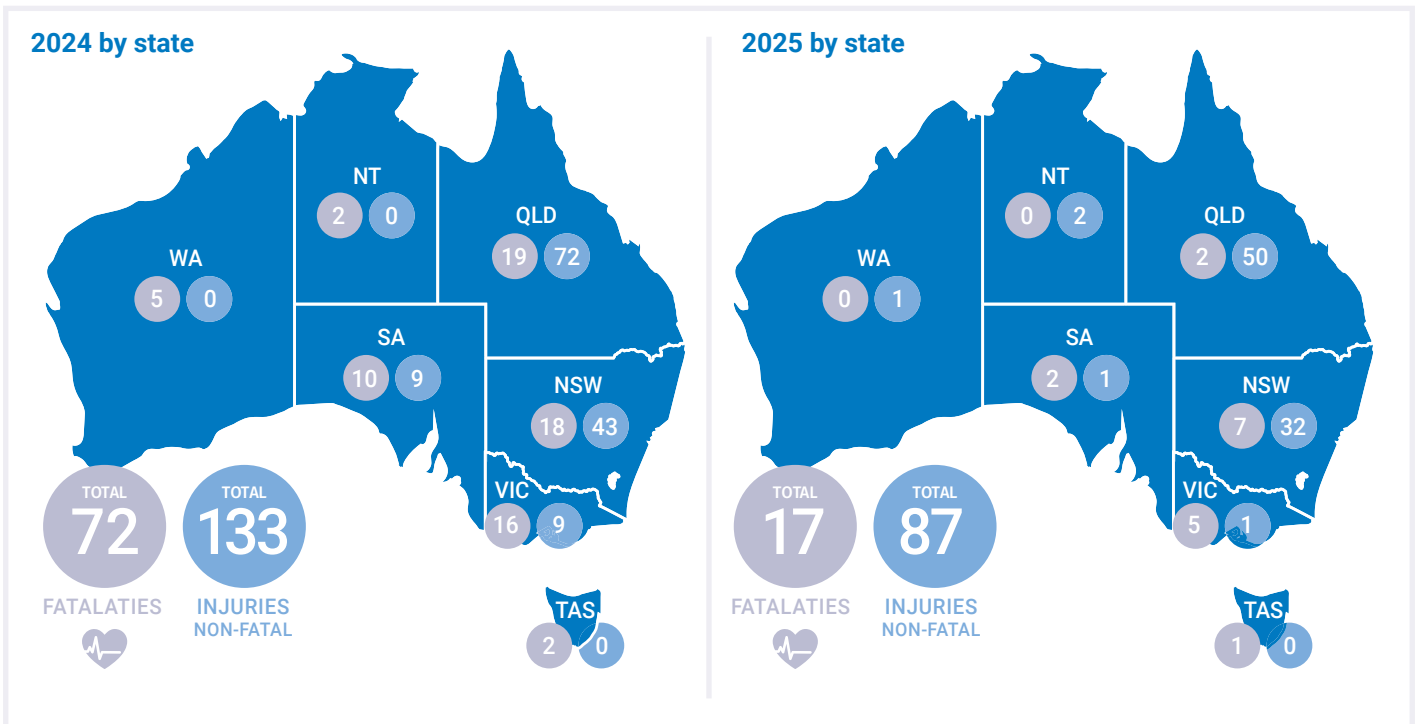
WFI remains steadfastly committed to improving farm safety. WFI local area representatives, who live and work within rural and regional Australia, continue to work closely with their farming clients, walking their farms together to ensure they understand and minimise their site-specific risks.

We know not everyone gets a second chance, and a momentary lapse in concentration can change a life forever. We hope that through sharing our data and insights in this report, we can help raise awareness of incident triggers and types, with the aim of reducing injuries and fatalities on farms.

2025 WFI INSURANCE – Key Agricultural Insights



Snapshot



A warning we can't ignore and a *Second Chance* we can't waste

In 2023, the agricultural sector recorded its lowest number of on-farm fatalities in recent history: 32 lives lost. While any loss is too many, it felt like a step in the right direction; a hopeful sign that safety messages were cutting through, that culture was shifting. But in 2024, the momentum reversed. Tragically, we saw 72 people die on Australian farms, the highest number of fatalities in two decades.

This sharp rise should be seen for what it is: a serious warning. A year that reveals just how fragile progress can be, and how quickly complacency, pressure, fatigue, or a moment's inattention can turn into tragedy.

Yet even more concerning is what hasn't changed. For more than a decade, the number of severe injuries on Australian farms has remained stubbornly static. Each year, hundreds of people are hospitalised, many with life-altering consequences and the patterns are predictably familiar: machinery incidents, quad bike rollovers, livestock handling, falls from heights. These injuries aren't just statistics. They're livelihoods changed, families impacted and communities stretched.

The consistent injury rate tells us something important: that while safety messages may be heard, they're not always translating into behaviour change. Or, that the systems and structures farmers work within, from limited time, to outdated equipment, to cultural pressure to 'push through', continue to place them at unacceptable risk.

2025 must be our second chance. A reset. A year to take a hard look not just at what went wrong in 2024, but what isn't working in the bigger picture and to start having more honest conversations about the conditions, expectations and everyday decisions that shape safety on Australian farms.

Reducing deaths is critical, but bringing down the unchanging rate of severe injuries is equally urgent. This means thinking beyond high-visibility campaigns and asking what practical

support farmers need to shift everyday behaviour including better planning, better conversations, and less tolerance for the 'near miss' culture that normalises risk.

We don't get to choose the warning. But we do get to choose what we do next.

Let's treat 2025 as the second chance it is; to work smarter, lead by example, and make sure this year tells a better story.



Behind every number is a name. Behind every injury, a life changed forever.